



# LED TV Firmware Upgrade v.1 - PC USERS

## FIRMWARE UPGRADE

Firmware upgrade v.1 provides performance improvements to Westinghouse LED TVs in 3 areas

- Channel Change Sync – Improves response time
- RF Analog values – Improves Analog Video Reproduction
- New Audio Curve (New SRS settings for LED: There are different SRS settings starting at 80% volume and above)

**Note: If you don't feel comfortable performing the upgrade, you have the option to call Westinghouse Technical Support at *1-800-701-0680* for assistance.**

## PC USERS: USB THUMB DRIVE (FLASH DRIVE) PREPARATION




### Step One:

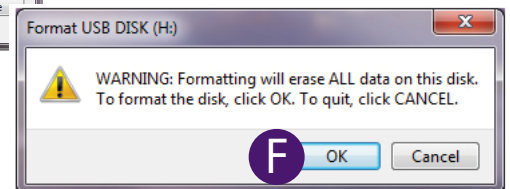
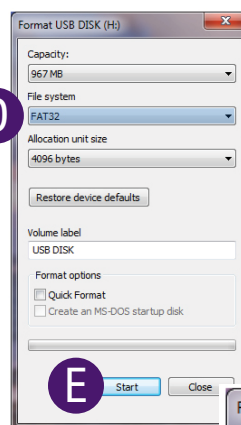
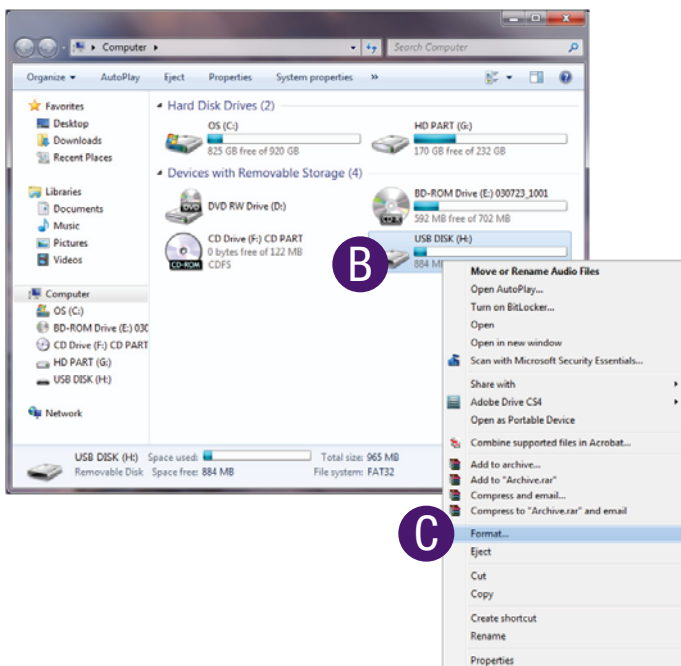


A thumb drive is necessary to successfully upload and upgrade your LED TV.

Steps to prepare the USB thumb drive

*(Note: All data will be erased, make sure to back up any information on the drive before formatting)*

- Insert USB thumb drive into your computer. 
- Go to  (Start Menu Screen) and locate and open  (My Computer), locate to access USB thumb drive.
- Right click on the Removable Disk (USB Drive) icon.
- From the menu, select Format.
- Under File System, select **FAT32**.
- Select Start to begin formatting.





# LED TV Firmware Upgrade v.1 - PC USERS

## DOWNLOAD FIRMWARE

**Step Two:** Download your new firmware

**A.** Go to [www.wde.com](http://www.wde.com), and click on “SUPPORT” tab at the top of the page.



From the support page, click on “downloads” (<http://wde.com/support/downloads/>)



**B.** Select the size category of your LED TV on the left side, then on the right locate your LED TV model. If there is a firmware upgrade for your LED TV, it would be listed underneath that model.

**C.** To download the firmware upgrade, click on **Firmware.pkg**

**D.** Save the file onto your **FAT32**-formatted USB thumb drive by selecting it in the Save As window.

**E.** Check the root directory of the USB thumb drive to be sure the firmware was transferred (**Firmware.pkg**)

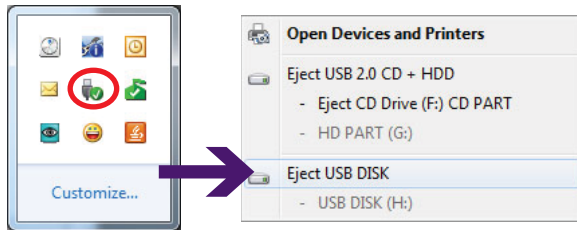


# LED TV Firmware Upgrade v.1 - PC USERS

## UPGRADING TV

**Step Three:** Upgrade firmware onto your TV

- A.** Safely remove the USB thumb drive from your computer by clicking on the remove hardware icon on the lower left task bar of your desktop.



- B.** Take the USB thumb drive to your Westinghouse LED TV.  
**C.** Turn the LED TV power off with the remote (if not off already)  
**D.** Insert the USB thumb drive into the service port.



- E.** Turn the LED TV power on with the remote. First you will see the Westinghouse "W" logo, after a few seconds the upgrade process will start. Follow the message on the screen.



- F.** Remove USB thumb drive and power off/on.



# LED TV Firmware Upgrade v.1 - MAC USERS

## MAC USERS: USB THUMB DRIVE (FLASH DRIVE) PREPARATION

### Step One:

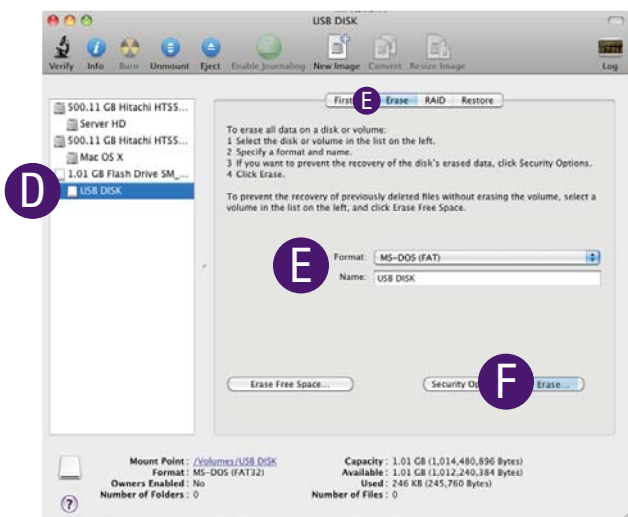
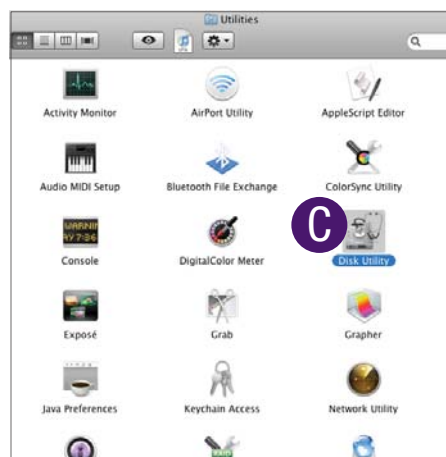
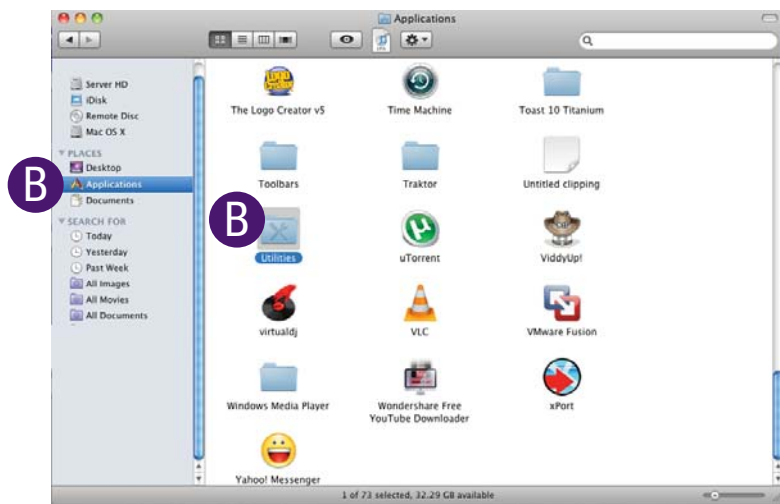


A thumb drive is necessary to successfully upload and upgrade your LED TV.

Steps to prepare the USB thumb drive

(Note: All data will be erased, make sure to back up any information on the drive before formatting)

- A. Insert USB thumb drive into your computer. (USB will show up on your desktop)
- B. Go to Applications and click on the Utilities folder.
- C. Click on Disk Utility.
- D. Select USB Disk on the left side menu to format just the flash drive.
- E. Select "Erase" at the top of the right side of the screen. Specify "MS-DOS (FAT)" under Format and provide a name for the drive (ie. FIRMWARE).
- F. Click on "Erase".
- G. A window will pop up prompting "Are you sure you want to erase the partition "USB DISK"?", click "Erase" to begin formatting.



3

3



# LED TV Firmware Upgrade v.1 - MAC USERS

## DOWNLOAD FIRMWARE

**Step Two:** Download your new firmware

**A.** Go to [www.wde.com](http://www.wde.com), and click on "SUPPORT" tab at the top of the page.



From the support page, click on "downloads" (<http://wde.com/support/downloads/>)



**B.** Select the size category of your LED TV on the left side, then on the right locate your LED TV model. If there is a firmware upgrade for your LED TV, it would be listed underneath that model.

**C.** To download the firmware upgrade, click on (**Firmware.pkg**)

**D.** Save the file onto your **FAT32**-formatted USB thumb drive by selecting it in the Save As window.

**E.** Check the root directory of the USB thumb drive to be sure the firmware was transferred (**Firmware.pkg**)



# LED TV Firmware Upgrade v.1 - MAC USERS

## UPGRADING TV

**Step Three:** Upgrade firmware onto your TV

- A.** Safely remove the USB thumb drive from your computer by dragging the thumb drive icon on the desktop into the trash.
- B.** Take the USB thumb drive to your Westinghouse LED TV.
- C.** Turn the LED TV power off with the remote (if not off already)
- D.** Insert the USB thumb drive into the service port.



- E.** Turn the LED TV power on with the remote. First you will see the Westinghouse “W” logo, after a few seconds the upgrade process will start. Follow the message on the screen.



- F.** Remove USB thumb drive and power off/on.

[www.westinghousedigital.com](http://www.westinghousedigital.com)